

Who we are



Bob White has been operating seismic instruments in Iceland for 20 years

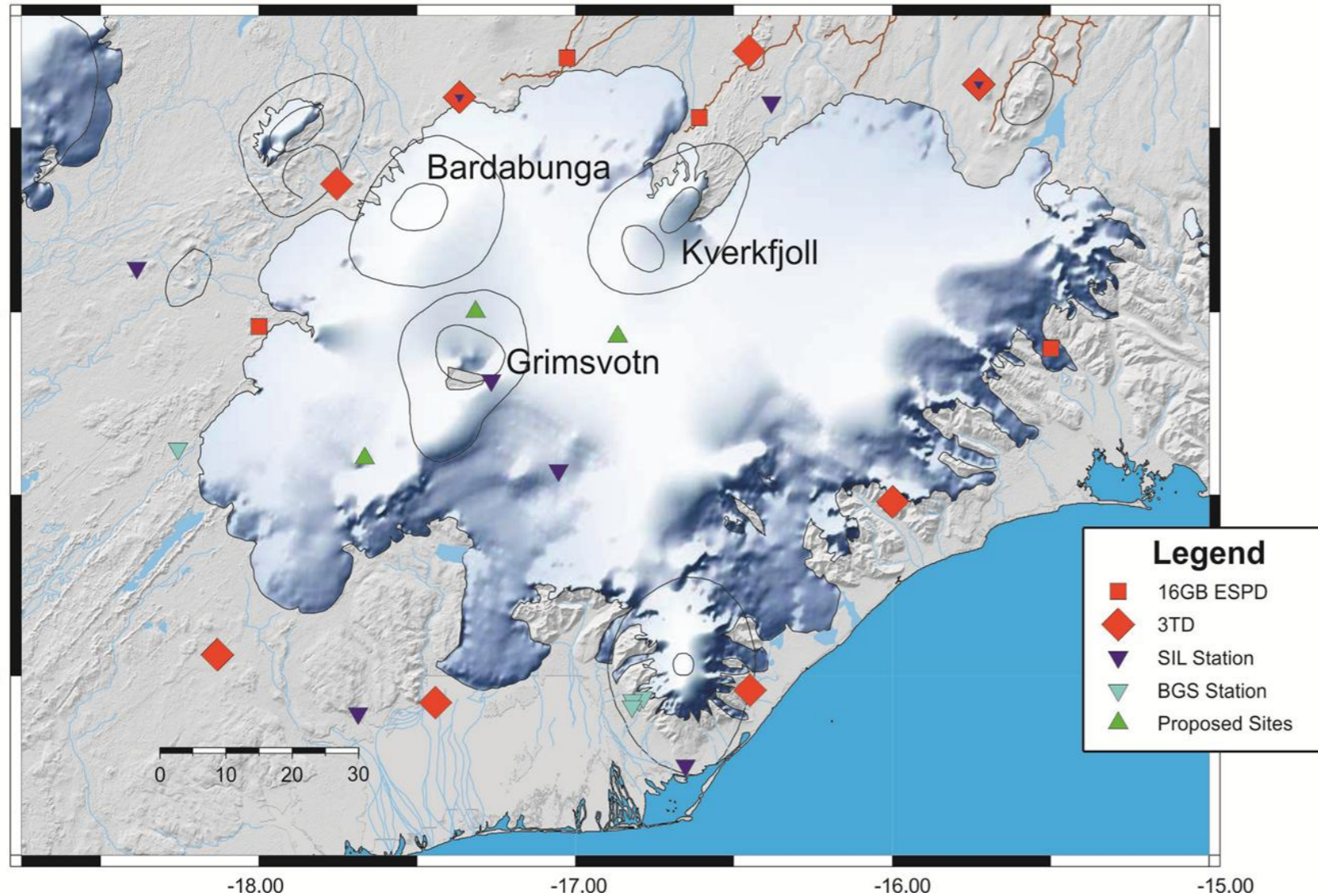
Currently operate of network of 6TD's and ESPD's around the Northern Volcanic Zone focusing on Askja.



UNIVERSITY OF
CAMBRIDGE

What we are going to do

Planned Station Deployment 2013-2015



Deploy 8 Guralp 3TP and 3 ESPD instruments around Vatnajökull

Integrate network with the present SIL network, BGS stations, new borehole instruments and steerable arrays

Instruments may be telemetered by IMO

Timeline and Deliverables

As part of Work program 5 we aim to deliver:

- An accurate velocity model using both traditional traveltimes tomography and ambient noise tomography.
- Accurate hypocentral locations beneath Vatnajökull.
- Well constrained source mechanisms.

Timeline

Jul 2012 - Initial deployment of some sites around Vatnajökull to test sites

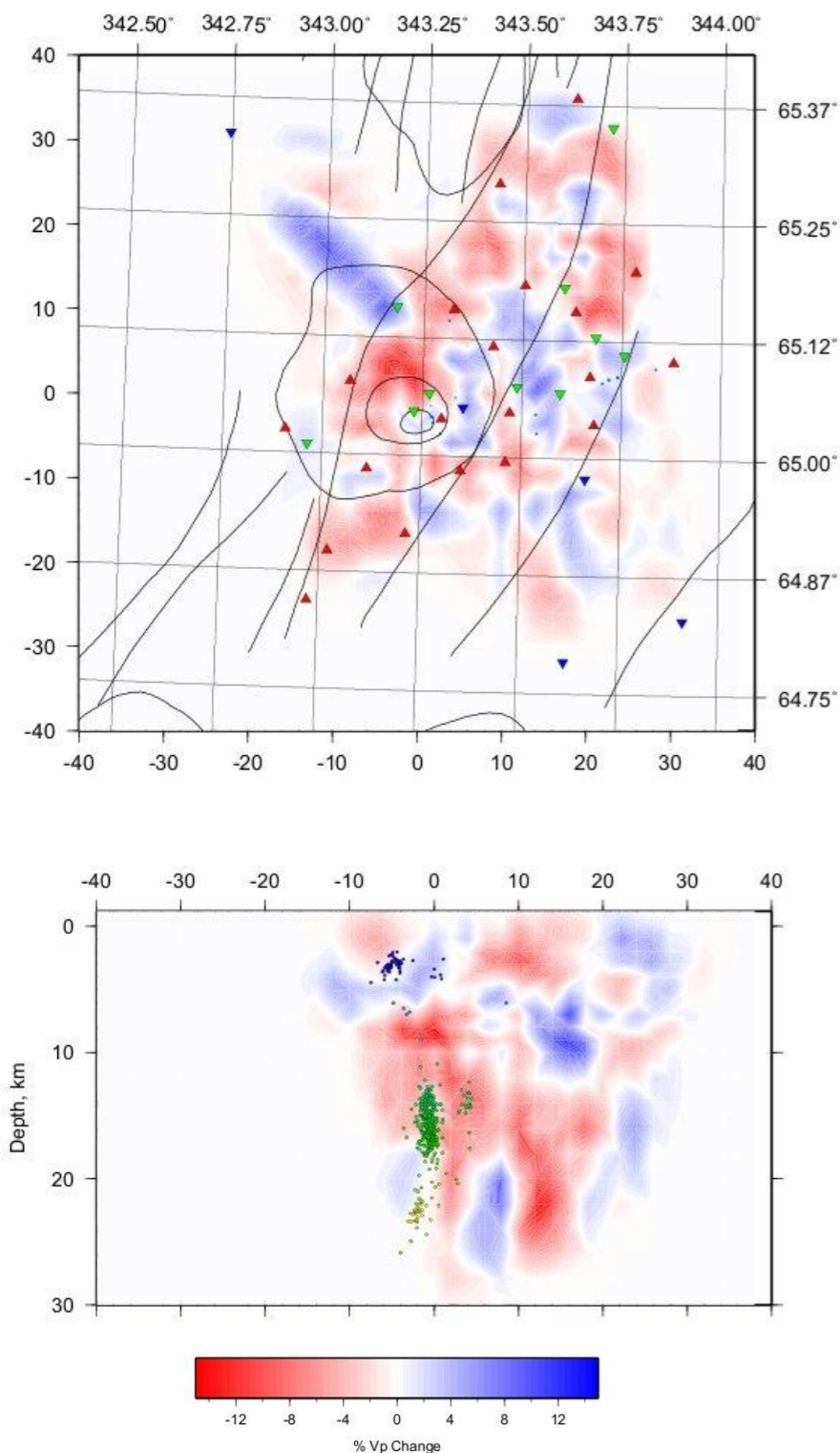
Sep 2012 - First download of sites around Vatnajökull, results currently being processed

Jul 2013 - Deployment of 3TP's around Vatnajökull

Sep 2013 - First download of summer data

Summer 2014 - First download of a year's worth of data. Preliminary velocity model and hypocentral locations.

Summer 2015 - Final download of sites. Sites removed. Final velocity model, hypocentral locations and source mechanisms



UNIVERSITY OF
CAMBRIDGE