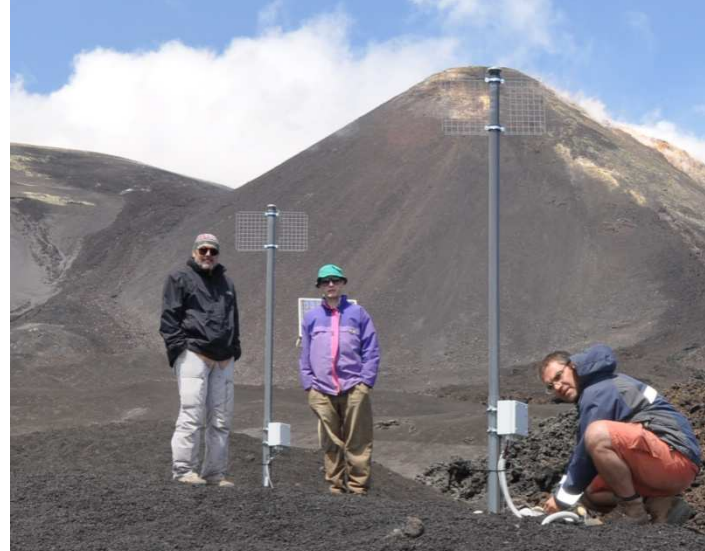
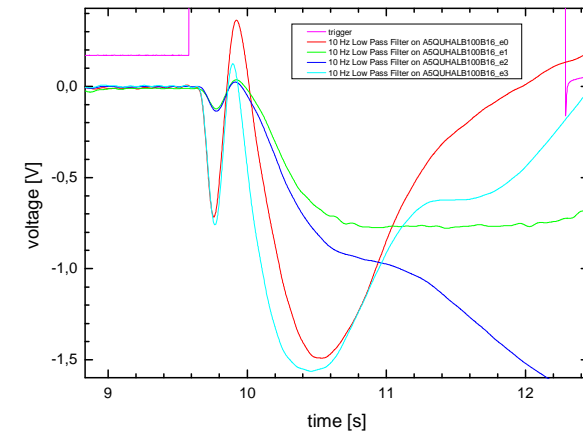
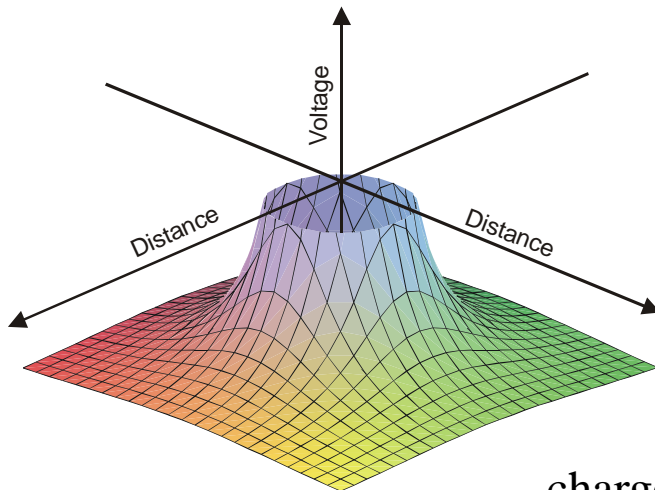
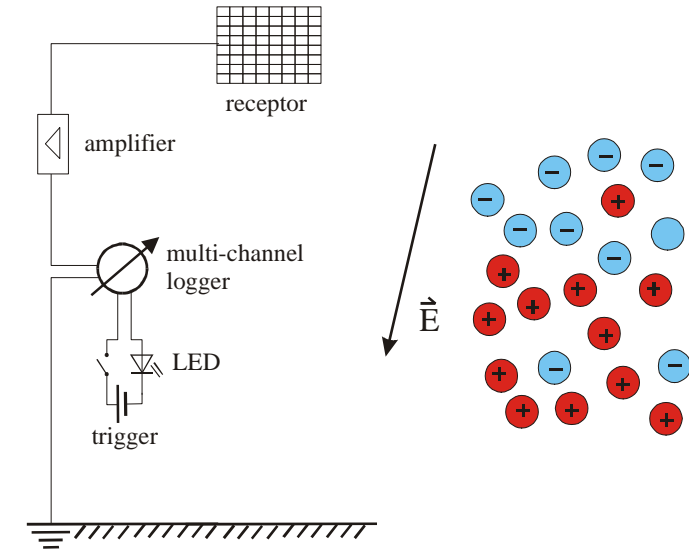
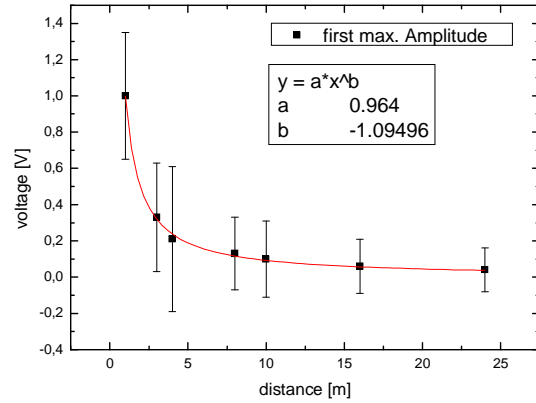


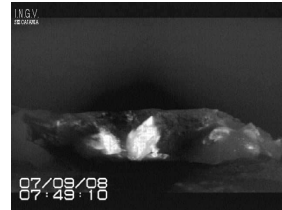


SHORT-TERM REGISTRATION OF ELECTRICAL FIELD VARIATIONS DURING VOLCANIC ERUPTIONS

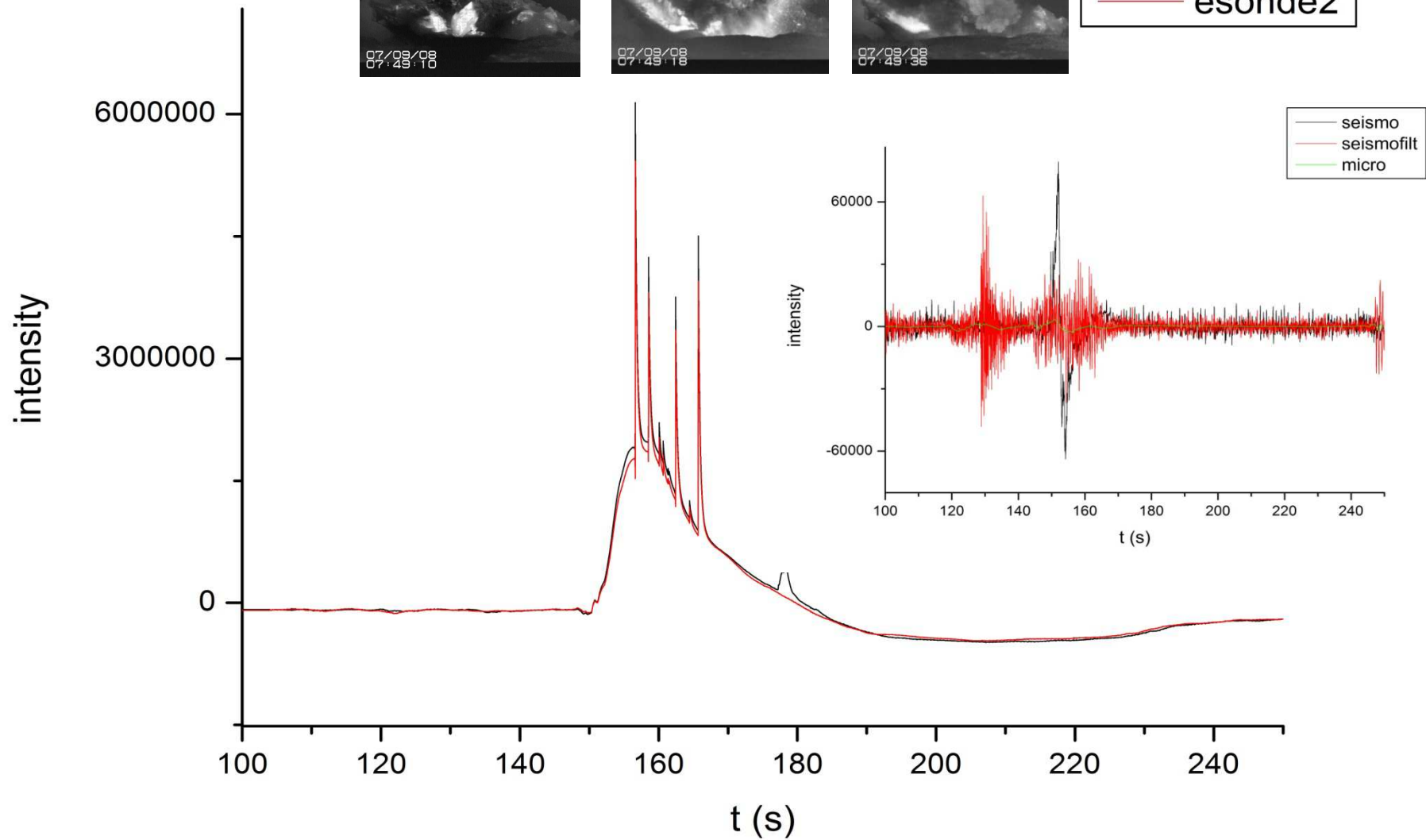




charge separation by uni-axial expansion
best fit source model: line-charge



— esonde1
— esonde2





deliveries

- type of eruption and relative magnitude can be monitored
- fragmentation intensity is mirrored by electrical signals
- ash production can be scaled using fragmentation experiments

milestones

- permanent stations on Grimsvötn and Hekla & 3 mobile stations
- calibration to local magma properties and geometry
- on-line measurement of ash production and energy release

Scientific crew : *Bernd Zimanowski, Ralf Büttner, Andrea Schmid*
Technician : *Anton Uttinger*